



## ABOUT US

**Dhashvi Global Sourcing** is a TEAM of seasoned professionals in the field of product development, sourcing and quality assurance of Indian origin products!

We are serving our valued customers in sourcing of products in Right Quality and Right Prices. We have practical expertise of handling Home Furnishing, Wood and Iron Furniture, lighting, Decorative Accessories, Floor covering, Fashion Garments, and Accessories etc.

We continuously challenging ourselves to improve every day. We go extra miles for our customers to amaze them with our dedicated services.

We Sensibly work together with Indian factories and put our heart and soul to ensure that our customer Wins always in terms of getting unique quality products, timely deliveries and most important unbeatable prices so that together we can ensure sustainable growth of their businesses.

**Dhashvi** is a pure service company, we offer a completely transparent supply chain with no hidden costs and encourage customers to visit the factories and suppliers with whom we work on their behalf. We are committed for our services and keep all affairs in the strictest of confidence. #india

The bottom of the page features a decorative graphic consisting of overlapping geometric shapes in blue, yellow, red, and grey, mirroring the design in the top right corner.

TEXTILES,

**KITCHEN LINENS** : Apron, Glove, potholder, Double oven gloves & Kitchen towels.  
Kitchen towels( Terry, Non terry , Waffle, Printed, Yarn Dyed checks, Stripes & Embroidery...

**TABLE LINENS**: Tablecloth, Napkin, Placemat, Runners, Bread baskets, Tea coasters & Chair Pads etc...

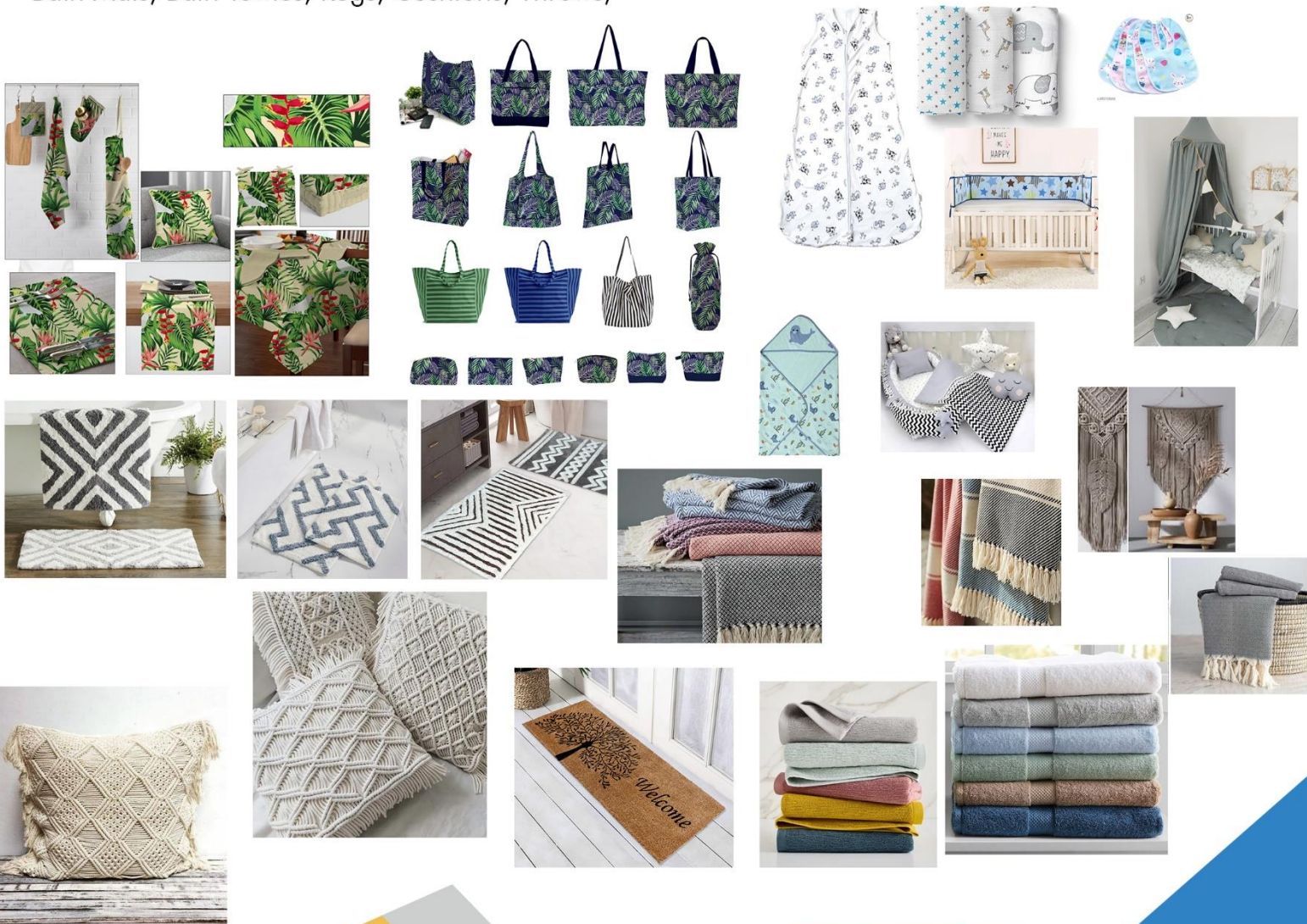
**LIVING**: Decorative Cusions, Curatins, Sofa Throws etc...

**OUTDOOR**: Chairpads, Box Cushions, long Matress etc....

**ACCESSORISE**: Shopping bags, Tote bags, Cosmetic, Staionary pouches etc...

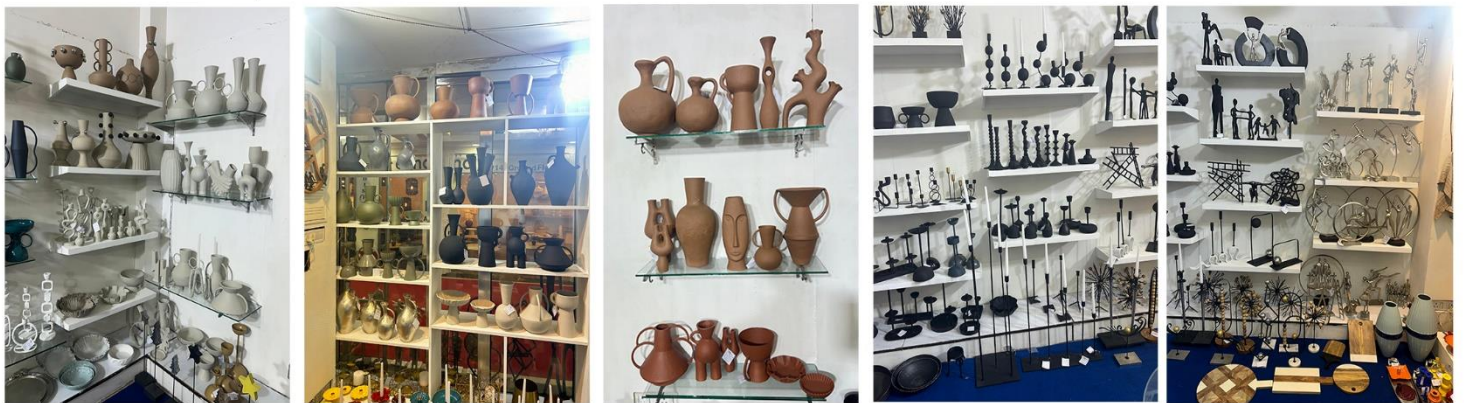
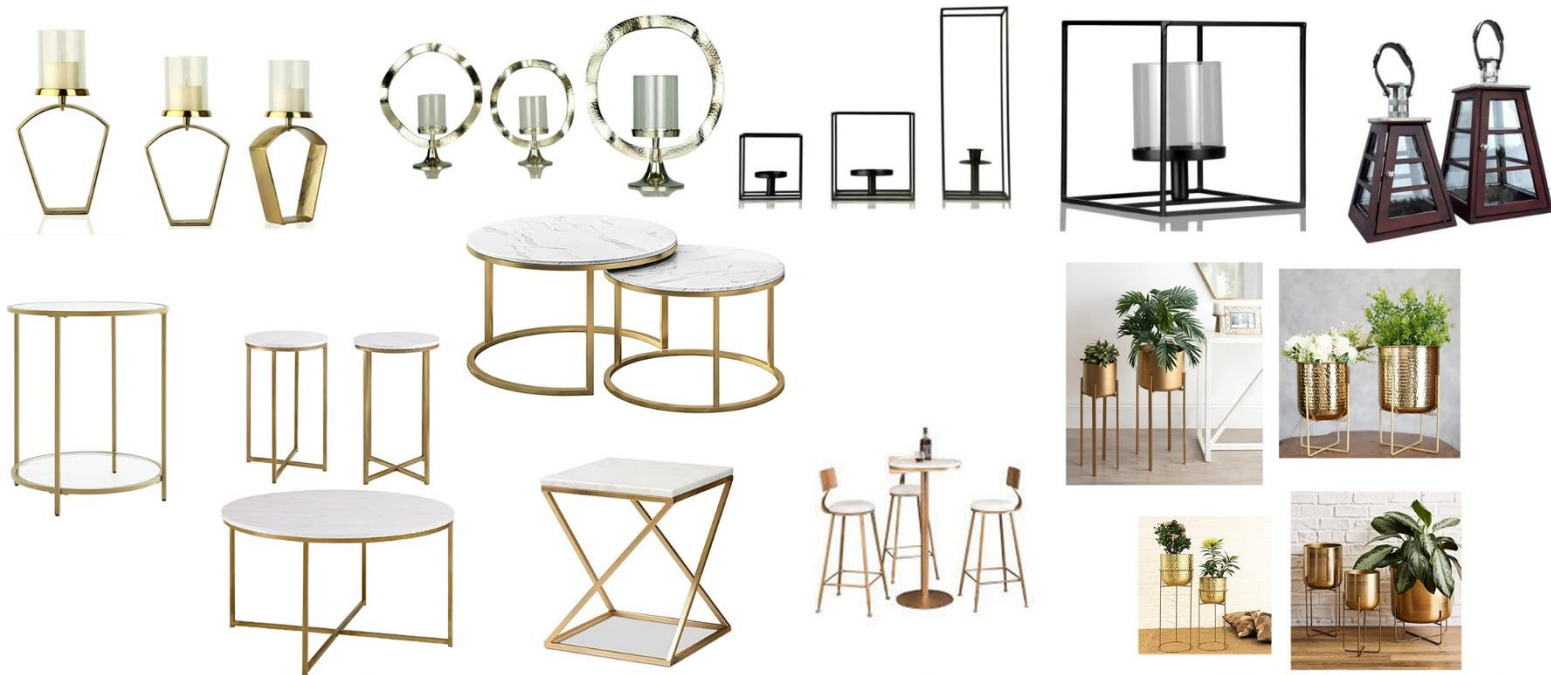
**KIDS TEXTILES**: Bibs, Swaddle, Blackets,Sleeping bags, Bumpers, Hooded Towels, Wipecloth & Canopy Beddings etc...

Bath Mats, Bath Towles, Rugs, Cushions, Throws,

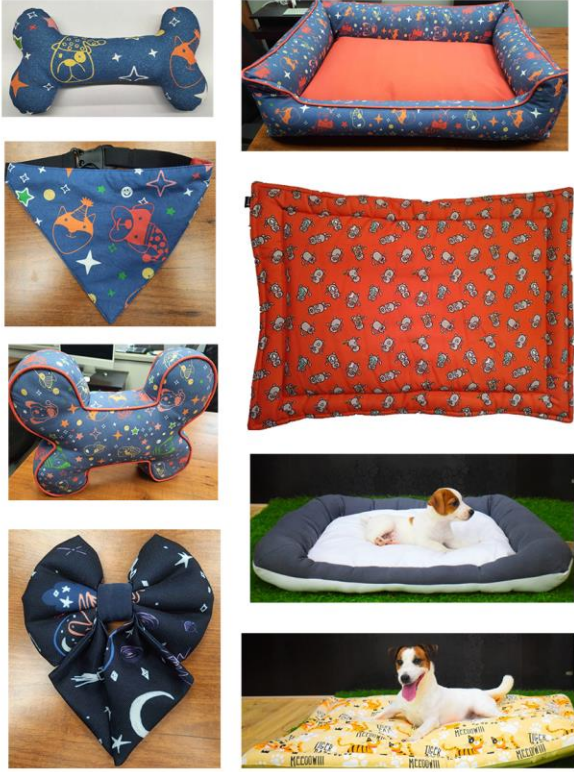


HARDGOODS & FURNITURE

Tables in metals, Side Tables, Planters, Candle Holders, Wall Decors, Mirros, Photo Frames, Clocks, Metal With Cushoin chair, Iron Bench, Napkin rings etc....



Pet Prodcuts



Coir/Rubber mats



T-Shirts, Mens, Womens, Womens Leggins, Kids Wear



## Quality Policy

Taking responsibility, acting professionally and delivering satisfaction to our customers always.

Forming a win-win relationship with our clients, vendors and associates.

Meeting our customer needs on time and every time with appropriate infrastructure and reactivity.

Practicing an honest, transparent, and competent relationship with our customer, supplier and employee.

Building supplier chain integration based on mutual trust, co-operation and co-existence.

Assisting the suppliers to upgrade their sourcing, production capacity, infrastructure and collections.

Instituting Quality Management System for effective and complaint free business environment.

Effective utilization of our multi-locational presence by adopting the latest technology and to render a flexible and a proactive service.

Empowering employees to take initiatives and control in their work areas, sharpening their skills, \ and granting them the required exposure in order to create a confident team.

Adhering to Social, Ethical and Environmental norms of the present times.

## Quality Assurance

ensuring the quality of the products sourced by us and ordered by our clients is a very important part of our responsibilities. We have adopted the universally acclaimed system of Quality Evaluation known as the AQL (Accepted Quality Level). Based on the principles of categorizing defects as Major and minor and following the acceptability ratio of the same, this system enables our Quality Assurance Executives to decide if the merchandise passes the quality norms of the client. It also helps them identify and solve the inherent technical problems faced during production of various fabrics/materials and thus to take precautions at early stage.

Moreover based on the nature of the product , we ensure that they meet the technical standards - f or ex. on all textile articles, we follow the required norms of wash fastness, dry rub/crocking, l ight fastness for some items, etc...Likewise for metal items of edible use, we ensure that they pass the food safety test, lead content test, etc..

## Service

We assist in converting a drawing Raw material an Aesthetic and Quality Product - at affordable price - in shortest possible lead time - easy and quick arrival of goods and documents to the final destination.

This chain clearly explains our services:-



## Sourcing & Product development

Informing the Customers about the market trends and latest innovations related to Home Decoration and Lifestyle products.

Choosing the right vendor based on their design and commercial abilities.

Assisting the vendor to interpret the buyer's guidelines/drawings and create the Product closest to the buyer's requirements.

Preparing the buyer's itinerary based on their past sales, and proposing potential vendors for the future.

Assisting the clients in making complete collection following their trend forecasts and negotiating best prices for selected products.

Despatching requested samples to the buyer with complete specifications.

## Production

Coordinating the placement of orders and validating its details.

Monitoring production progress and keeping the buyers informed.

Conducting inspections at various stages to ensure conformity of quality.

Helping the factory to upgrade their existing design and production infrastructure and assist them in solving any production problems.

## Logistics

Ensuring the dispatch of the shipment within the date fixed by the client.

Monitoring and ensuring that the export documents are as per the buyer's requirements.

Coordinating with the forwarder/shipping lines/airlines for a timely and cost effective shipment.

Touch with us

**Prasanth Puttuswamy**

**Director**

N0.2/83 Anantha Nagar,  
Erode Main Road, Aathur Post,  
Karur-639002, Tamilnadu. India.

Mobile-+91 (0) 95 85 48 48 48

E-mail-dhashvigolbalsourcing@gmail.com